

ADC-66 Conveyor by

HIGH or LOW temp the ultimate choice...

- **Reliable** pre-wash
- **Unrivaled** cleaning ability
- **Best performance** of all listed 66" conveyors

- **Rated for dual sanitizing**
- **66% less** water than industry average
- **244 racks per hour** - .49 gallons water per rack
- **Auto fill and shut-off** standard

Water Curtain Rinseability

- activates prior to final rinse
- initiates the rinsing process and acts as a shield

- flips open, snaps shut
- quick fast clearing of spray arms
- shortens the cleaning process & eliminates down time



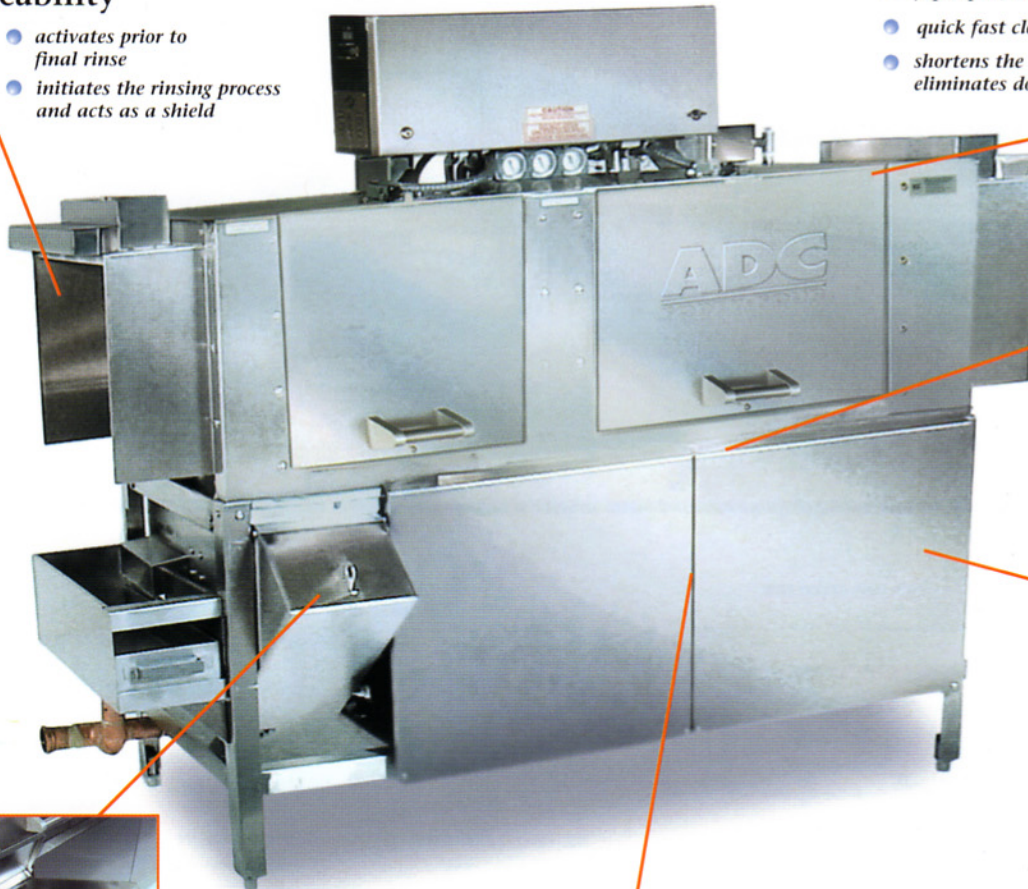
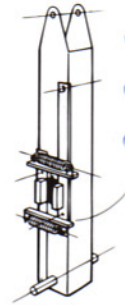
Captive end caps

Dual - Fail Safe Heater Control

- precise water control mechanism
- only allows heaters to operate when tank is full
- unaffected by heavy soil, water action, strong chemicals and lime build up

Fail-Safe Conveyor System

- slip clutch design - stops rack movement
- once removed operation easily resumes
- eliminates damaged racks



Pre-Wash Scrap Basket

- V construction
- keeps soil in tray
- protects pump



Drain Pump Filter

- 2 stage PUMP STRAINER
- eliminates wash pump obstructions and clogged jets,
- functions as drain stopper

At American Dish Service, Quality People, Designs, and Products have been the foundations of our organization for over 45 years.

www.americandish.com



American Dish Service
Manufacturers of Ware Washing Equipment

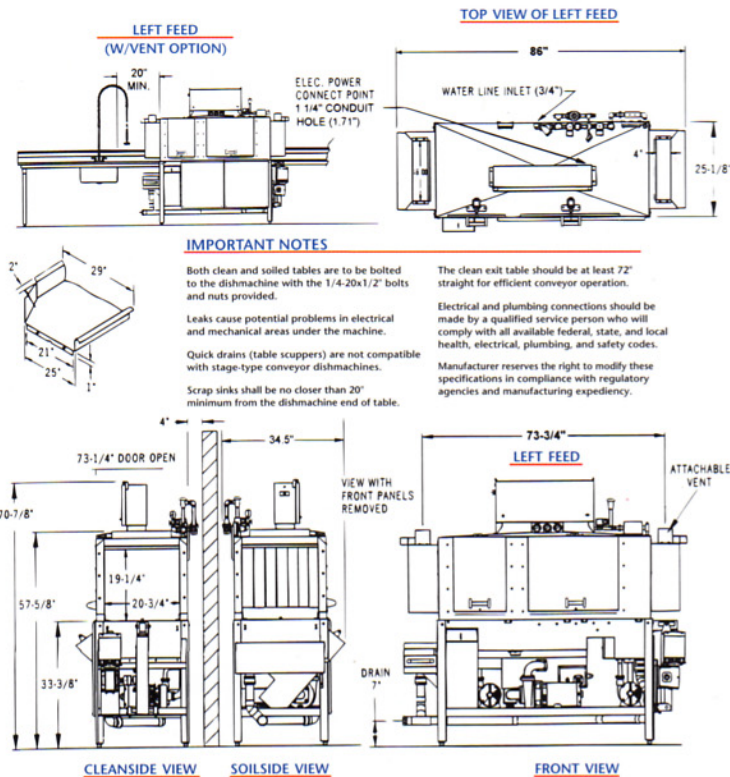
900 Blake Street Edwardsville, KS 66111-3820 **Toll Free** (800) 922-2178 **Phone** (913) 422-3700 **Fax** (913) 422-6630

ADC-66 Conveyor

- Deep "V" Scrap Tank
- Auto Fill/Auto Start/Shut-off
- Safety Shut-off Scrap Pump
- Overflow Scraping Feature
- Captive Endcaps
- Patented Water Control
- Water Curtain for Final Rinse
- 3 HP Wash Pump, 1.5 HP Scrap Pump
- 244-Racks per Hour, .49 Gallons per Rack



Effective 7/02



Model ADC-66 Specifications

ADC-66

FAMILY MODELS

	ADC-66 HOT TEMP	ADC-66 CHEMICAL
NSF RATED CAPACITY	244 rack /hr	244 rack /hr
CONVEYOR SPEED	6.8 ft/min (2.07 meters)	6.8 ft/min (2.07 meters)
WATER CONSUMPTION	.49 gal/rack (1.8 liters)	.49 gal/rack (1.8 liters)
TOTAL GAL. PER HR.	120 gph (454.2 liters)	120 gph (454.2 liters)
FINAL RINSE TEMP (20 psi)	180°F / (82.2°C)	120°F / (48.8°C)
SANITIZER	180° Water	50ppm CHLORINE
ELECTRICAL POWER SUPPLY	208/240v, 3 ph, 90 a, 60 Hz (Requires clean circuit, 3 AWG phase wires, w/10 AWG Neutral wire)	208/240v, 3 ph, 90 a, 60 Hz (1/3 HP Rinse, 1/3 HP Conveyor)
MOTOR RATINGS	1.5 HP SCRAP, 3 HP WASH (1/3 HP Rinse, 1/3 HP Conveyor)	1.5 HP SCRAP, 3 HP WASH (1/3 HP Rinse, 1/3 HP Conveyor)
HEATER RATINGS	18KW WASH, 2.25 KW RINSE	18KW WASH, 2.25 KW RINSE
RACK SIZE	STANDARD 19.75" x 19.75" (50.2 x 50.2 cm)	STANDARD 19.75" x 19.75" (50.2 x 50.2 cm)
ACCESS DOOR CLEARANCE	15" x 24.5" (38.1 x 62.2 cm)	15" x 24.5" (38.1 x 62.2 cm)
RACK CLEARANCE (through machine)	19.25" x 20.75" (48.9 x 52.7 cm)	19.25" x 20.75" (48.9 x 52.7 cm)
WATER INLET	(3/4") F.P.T.	(3/4") F.P.T.
DRAIN SIZE	(2") F.P.T., (7") Above Floor	(2") F.P.T., (7") Above Floor
HEIGHT (with door open)	73.25" (186 cm)	73.25" (186 cm)
WIDTH (Overall)	85.77" (217.8 cm)	85.77" (217.8 cm)
WIDTH, TABLE TO TABLE	66" (167.6 cm)	66" (167.6 cm)
DEPTH	34.5" (87.6 cm)	34.5" (87.6 cm)
SHIPPING WEIGHT	960 lbs (435.4 kg)	960 lbs (435.4 kg)
SHIPPING VOLUME (crated)	161.6 CU. ft. (4.6 cu meters)	161.6 CU. ft. (4.6 cu meters)

ADS has built a strong history based on Customer Service, Quality and Reliability. A Commitment to Excellence is the driving force behind American Dish Service.

900 Blake Street Edwardsville, KS 66111-3820

Toll Free (800) 922-2178 Phone (913) 422-3700 Fax (913) 422-6630